

**DELIVERING
EXCELLENCE
BUILDING TRUST
FOSTERING LASTING
RELATIONSHIPS**



www.hans-logistics.com

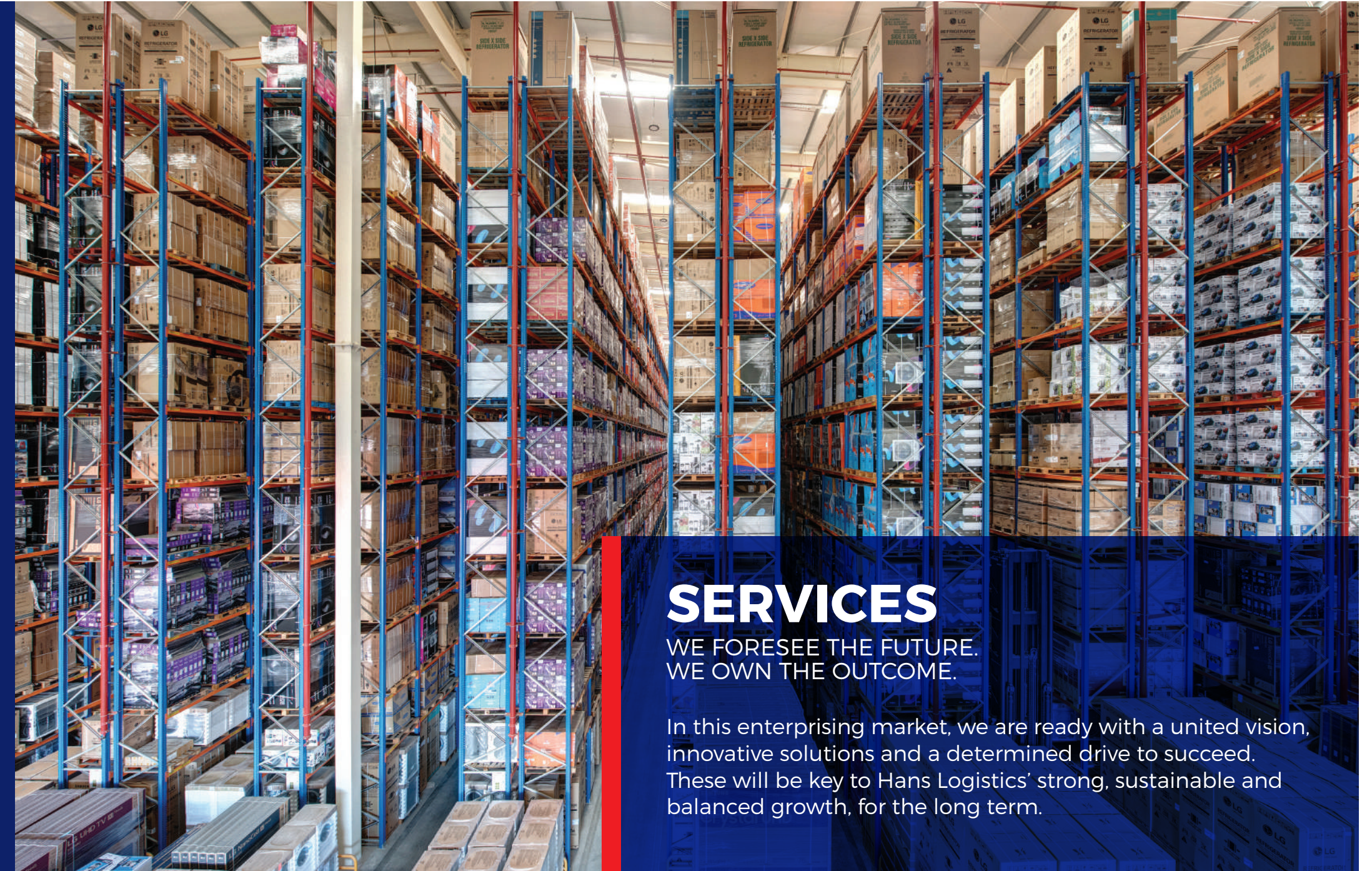
MODEST BEGINNING YESTERDAY. A GLOBAL FORCE TODAY.

Welcome to the Enterprising World of Hans Logistics.

From a modest beginning, Hans Logistics is now a trusted organization with multiple subsidiaries.

We deliver high quality and customized Logistics solutions through our network. Our strategy of partnering with best in class suppliers ensures our end users and clients have access to the best services available on the market.

Setting new benchmarks in all markets, Hans Logistics has built its reputation through uncompromising adherence to quality. Through our multi-disciplinary approach, we enjoy a strong presence in core markets across the region. Given our formidable track record of success, we are uniquely positioned to expand our horizons and spread our reach to emerging markets.



SERVICES

WE FORESEE THE FUTURE.
WE OWN THE OUTCOME.

In this enterprising market, we are ready with a united vision, innovative solutions and a determined drive to succeed. These will be key to Hans Logistics' strong, sustainable and balanced growth, for the long term.

NVOCC

We also offer our customers trading capabilities for the ocean freight in the Middle East, the sub continent and Asian Countries with our own containers including 45 feet dry van box containers.

SEA FREIGHT

Combined with years and hands on experience, we at Hans Logistics, are partnered with Global Carriers offering you cost effective rates, minimum transhipments, reliable service and tracking. Our services extends to your Full container load (FCL) as well as less than container load (LCL) shipments, with minimum impact on costs by the selection of sailing schedules and fast deliveries. Our experts also support the trade for cargoes which are oversized and heavy weights by guiding our customers to the service of special equipments by container vessels with optimized costs, transit time, land transport and speedy deliveries for their shipments.

AIR FREIGHT

The customers preference services. We strive in our efforts not only on regular air freights but also on managing cargo on charter flights and choosing the right airlines to the destinations and origins for the cargo to reduce the transit and delivery time serving the purpose of air freighting.

SURFACE LAND TRANSPORT

The services of customs clearance is also complimented and extended by delivering of goods to the designated destinations by land transport either within the country or cross border deliveries with a reliable, safe and fast process including cross border clearance of the goods in transit.

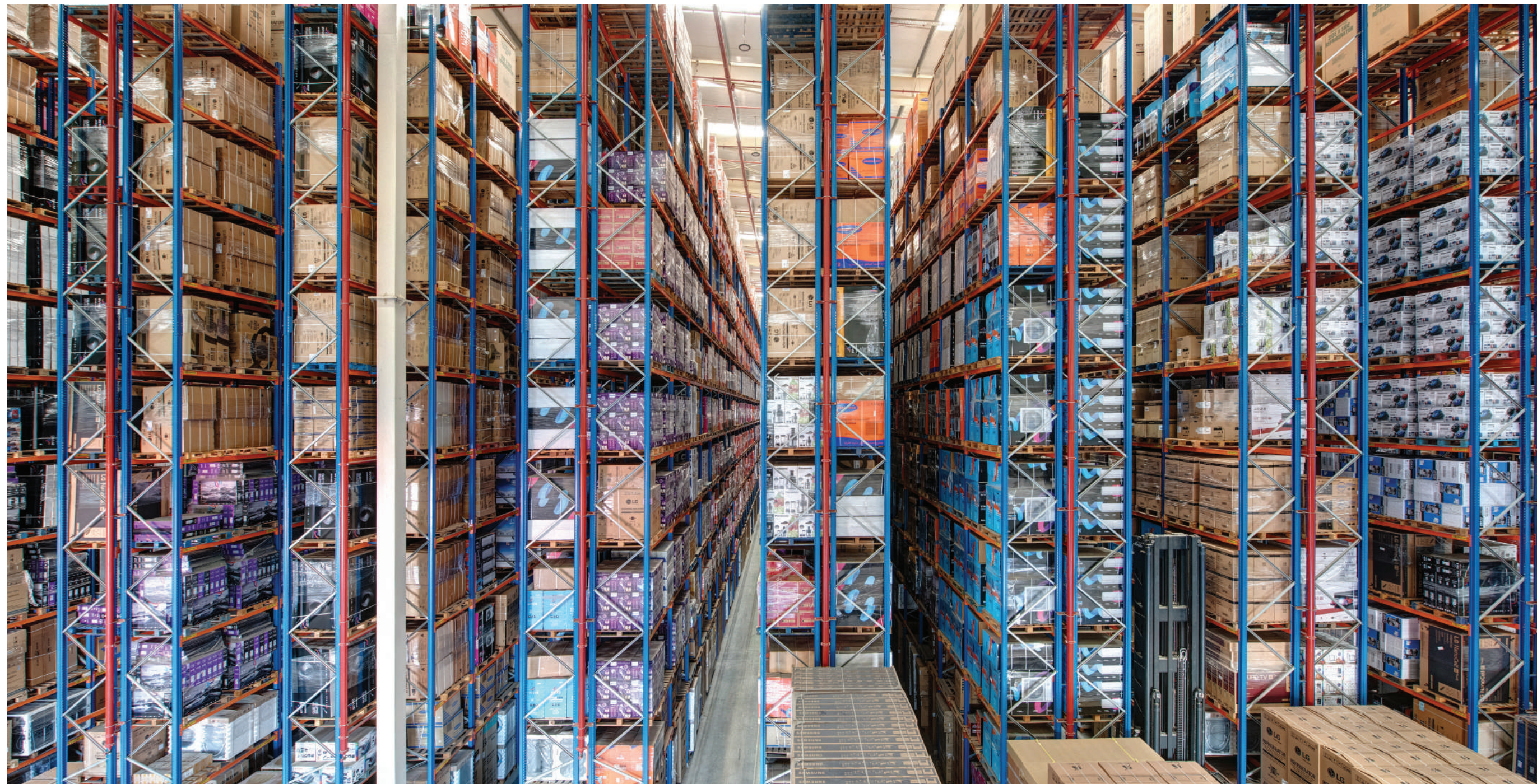
CUSTOMS

- Automated customs clearance (E-clearance)
- Electronic bond with customs and port authorities for the payments of duties and other statutory fees for faster clearance.
- IT system connectivity to the portals of customs and ports.
- E-clearance performed by trained and certified employees.
- Valuation, verification, classification services.



PROJECT CARGO SERVICES

Project Cargo forwarding by nature comes with its complexities than the standard freight forwarding. With Hans Logistics your cargoes are handled by an expert team with varied expertise for the management and execution of Project cargoes. Each Project Cargo is not identical and the team in Hans Logistics has very specific approach towards the cargo and services customized to each related contractual requirements.



NEW WAREHOUSE OPERATED BY SAME TEAM WITH ADVANCED TECHNOLOGY.

32K SQM PLOT AREA WITH CAPABLE OF

- 3500 TEUs storage capacity one single roof including ambient, temperature controlled and bulk space
- 27 Nos of loading Bays for easy traffic movement
- Additional of 15K SQM Interlocked Open yard for project cargo, car storage etc.
- Cargo transfer and transhipment facilities.
- 50+ Own fleets for container movement from and to Port.
- Fully computerized WMS with Bar Code and RFID Scanners.
- 24 hours CCTV inside and outside the facility.
- Burglar alarm system
- Fully Access controlled & guarded facility.
- Live connection with DCD networking.
- 100% insured facility

Reduced expenditure, increased efficiencies and measurable ROI are the key advantages clients enjoy by partnering with us.
At Hans Logistics, we are committed to become your provider of choice for end-to-end logistics services.



OUR CLIENTS

LG,
Samsung,
Hisense,
Bosch

HANS LOGISTICS FZCO

P.O. Box 40806 | Jebel Ali Free Zone (South),
Plot No: 20144 | Dubai, United Arab Emirates
+971 4 8811334 +971 4 8811335
info@hans-logistics.com
www.hans-logistics.com